

Metrological Sound Assessment of the Risk of Food Exposure to Nitrate from Consumers of a Public Canteen

Rafaela Fernandes
Cristina Oliveira
Ricardo B. da Silva


 

1

1

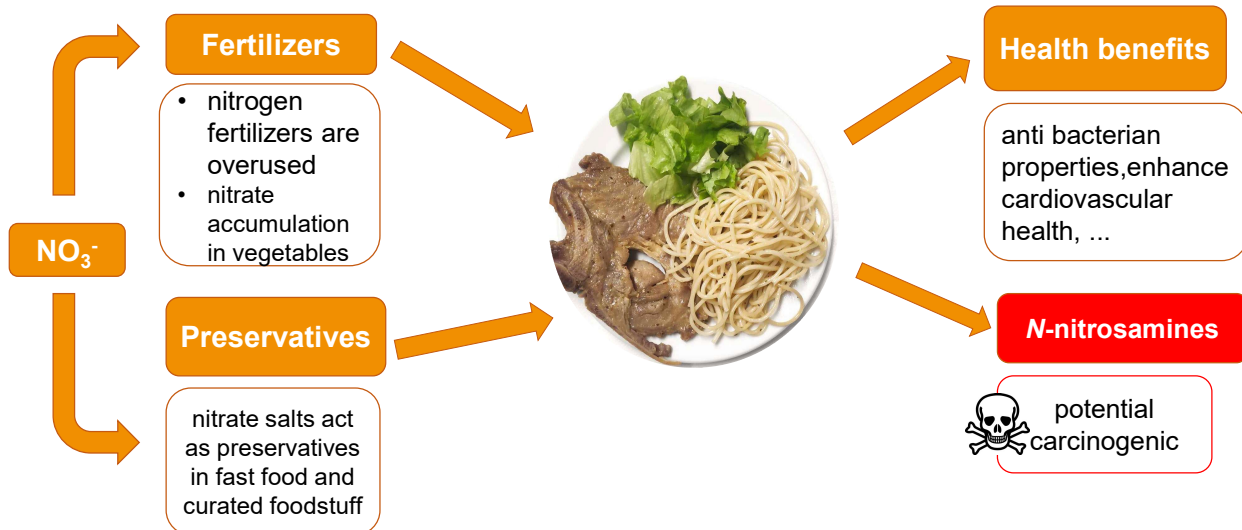
INTRODUCTORY CONSIDERATIONS



2

2

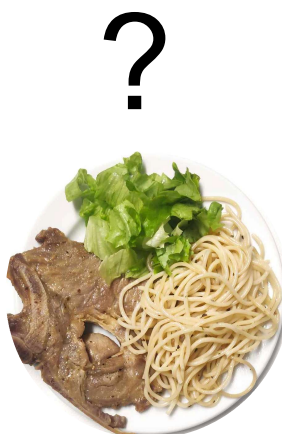
INTRODUCTORY CONSIDERATIONS



3

3

INTRODUCTORY CONSIDERATIONS



4

INTRODUCTORY CONSIDERATIONS

Consideration of the total diet

Consideration of consumption variability

Filling gaps in the literature



Preventive Medicine

5

5

EXPERIMENTAL PROCEDURE

Adapted from
EN 12014-4:2005



01 Sample collection



02



03



04



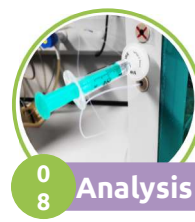
05 Extraction



06



07

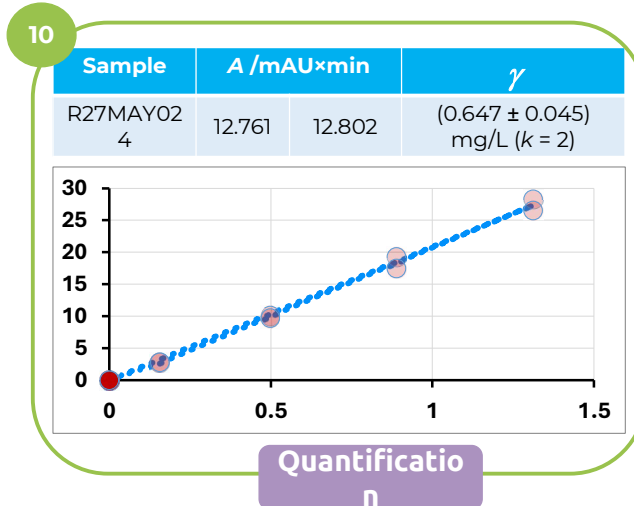
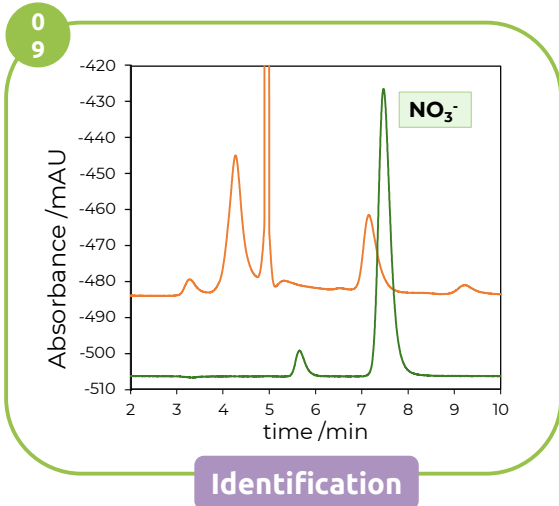


08 Analysis

6

6

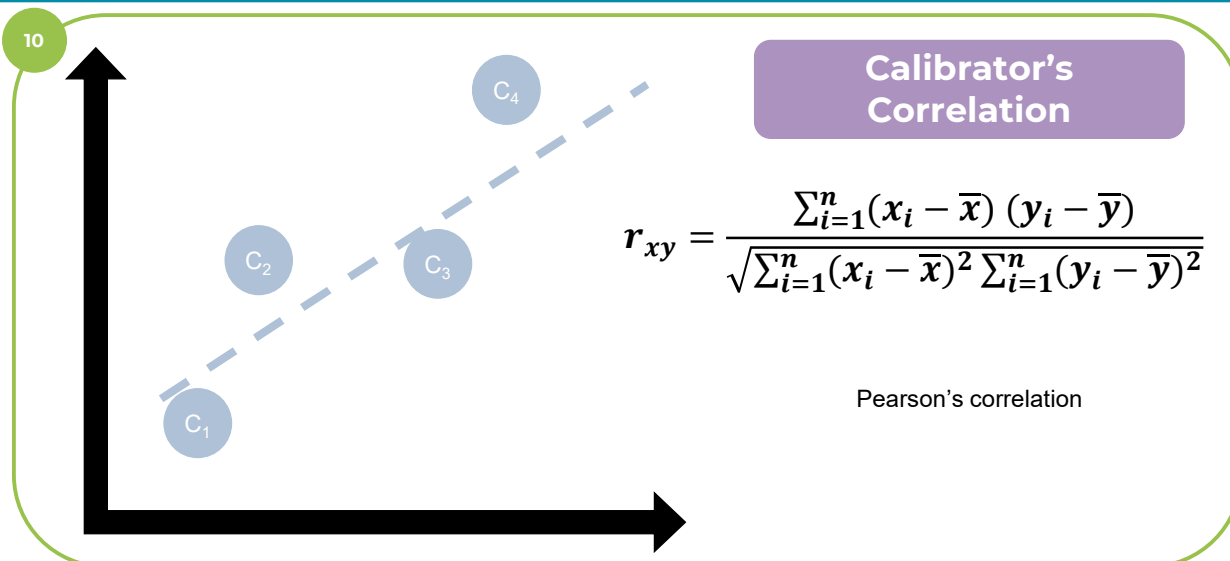
EXPERIMENTAL PROCEDURE



7

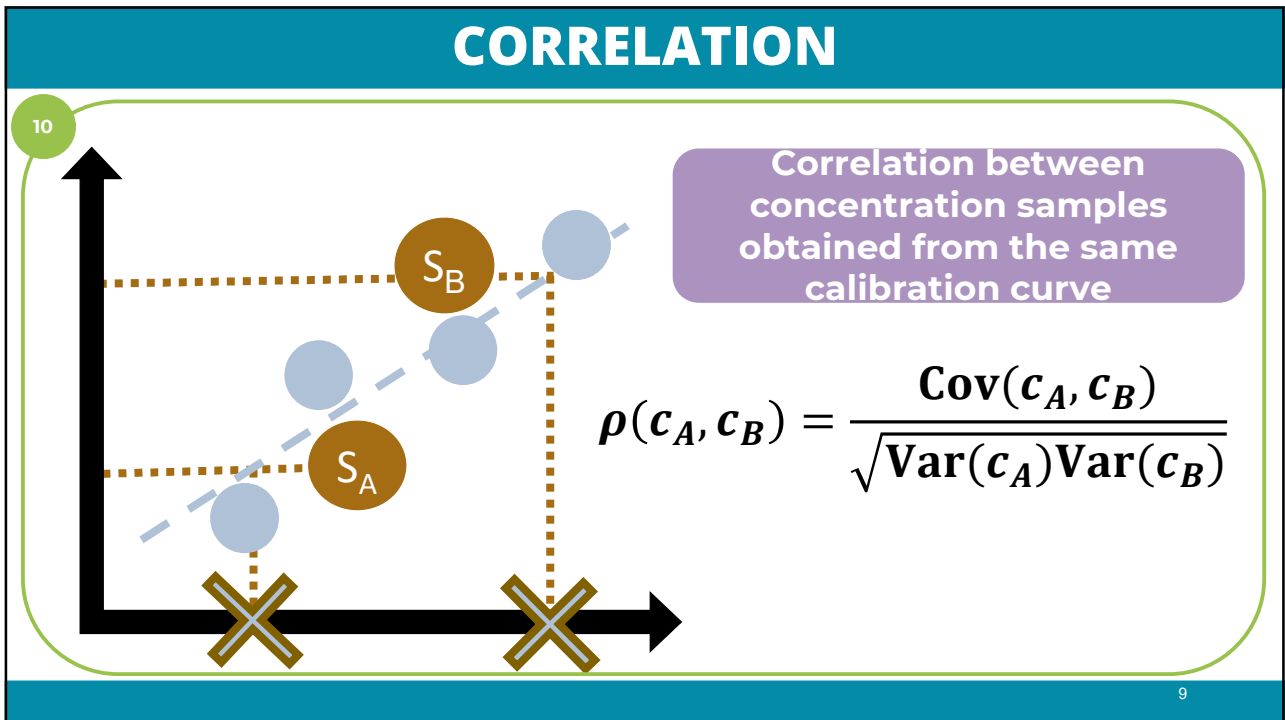
7

EXPERIMENTAL PROCEDURE

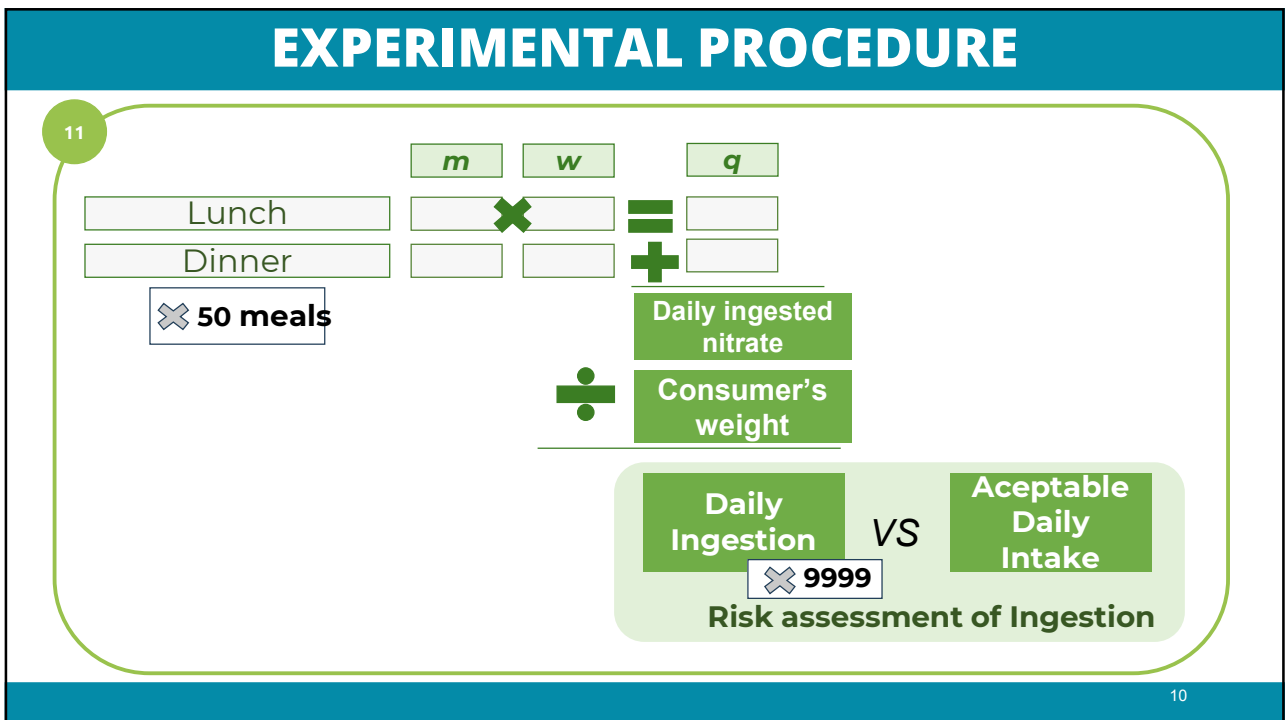


8

8

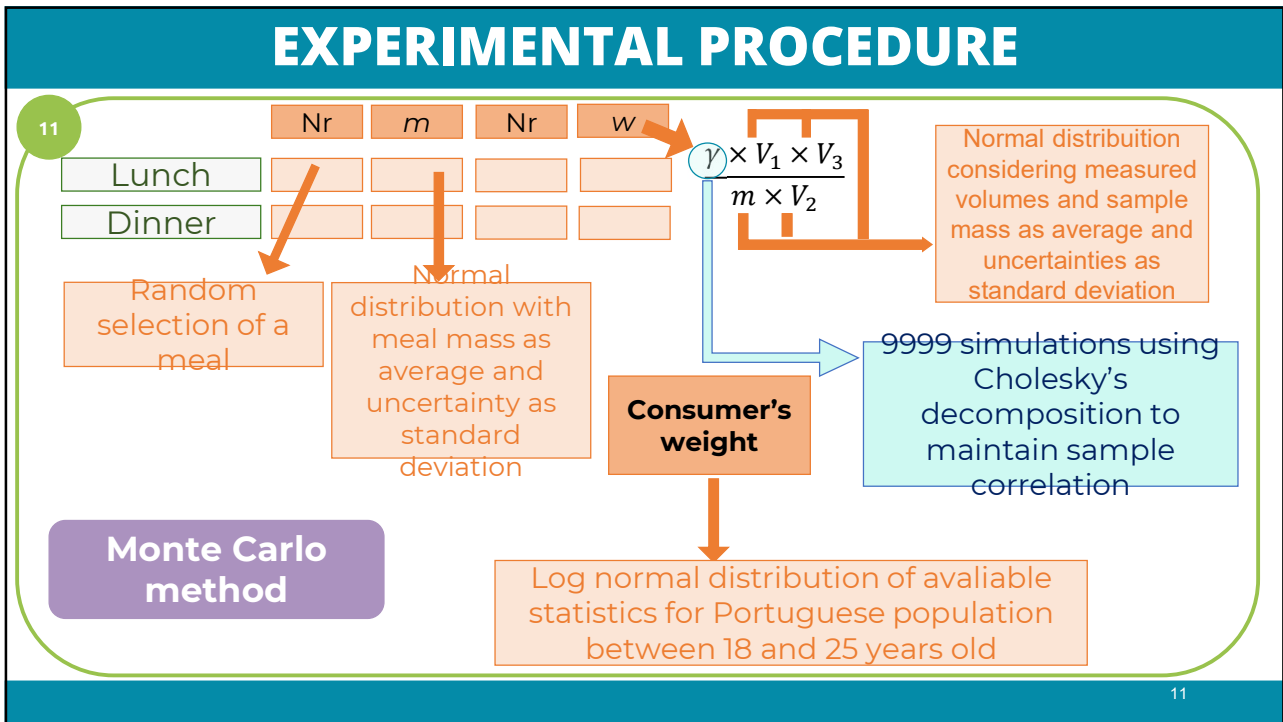


9

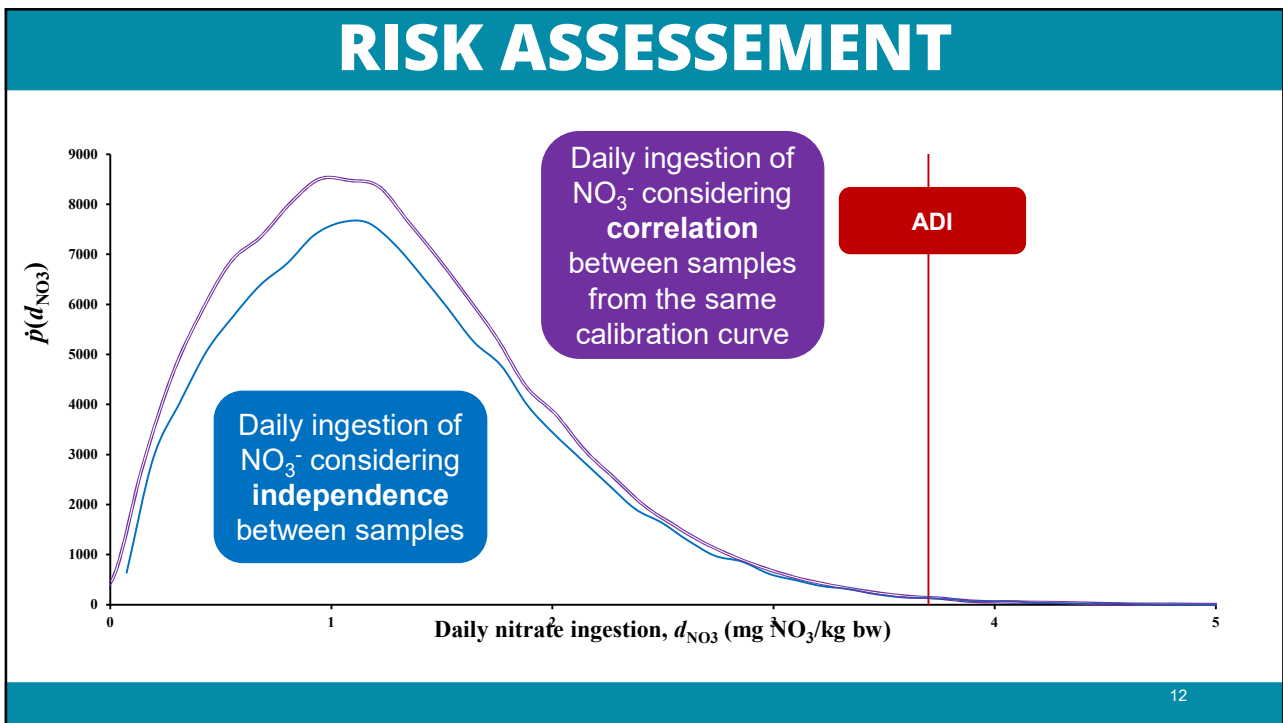


10

10



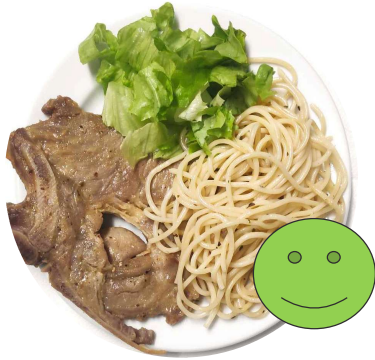
11



12

CONCLUSIONS

Canteen food
is.....



SAFE

The general student population has a 0.43 % probability of consuming above the ADI, while lighter female students have 1.2 %

Canteen uses seasonal local products and Portuguese dietary practices, so the risk assessment may be easily adapted to similar populations

The difference between the results considering independence or correlation is $< 5\%$: correlation does not impact the risk assessment

13

13

ACKNOWLEDGMENT

Thank you for your attention

This work was supported by Fundação para a Ciência e a Tecnologia (FCT) (Projects UID/00100/2025, <https://doi.org/10.54499/UID/00100/2025>, UID/PRR/00100/2025, and Institute of Molecular Sciences (UID/PRR/100/2025, <https://doi.org/10.54499/LA/P/0056/2020>).

14